

Short Report



Schmuckmuseum Pforzheim | Schmuckmuseum Pforzheim

Pforzheim Jewellery Museum

Jahnstraße 42
75173 Pforzheim

Tel: +49 7231 39-2126
Fax: +49 7231 39-1441

schmuckmuseum@pforzheim.de
<https://www.schmuckmuseum.de/>

Welcome!

Devoted to the history of jewellery, the Schmuckmuseum Pforzheim (Pforzheim Jewellery Museum) is the only museum of its kind worldwide.

Some 2,000 exhibits bear witness to the rich diversity of jewellery created over the course of five millennia, starting from prehistoric times to the present day. The museum's highlights include exquisite specimens from Greek and Etruscan antiquity and from the Renaissance and the Baroque periods, as well as outstanding examples of Art Nouveau jewellery, plus its unique collection of contemporary art jewellery created since 1960.

The main focus of the permanent exhibition is on treasures from classical antiquity, the Renaissance and Art Nouveau periods, a comprehensive ring collection and contemporary art jewellery creations, plus pieces that illustrate the history of the jewellery industry in Pforzheim, the »City of Gold«.

Two other collections, on permanent loan and displayed since 2006, provide important complementary insights into the diversity of jewellery: the Eva and Peter Herion collection of ethnographic jewellery, and the Philipp Weber pocket watch collection owned by the Sparkasse Pforzheim Calw savings bank.

The Reuchlinhaus, which houses the museum, is also an architectural gem, built in 1961 to designs by architect Manfred Lehmbruck in the *International Style*.

TEST RESULT

for

Schmuckmuseum Pforzheim

75173 Pforzheim, Certificate-ID: PA-13328-2022



This offer was classified according to
the criteria of the nationwide label

»Tourism for All«

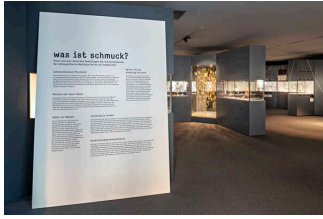
and, in the period from

June 2023 – May 2026

is entitled to use the label

»Accessibility checked«

and the associated pictograms
in accordance with the contract.



Schmuckmuseum Pforzheim

Schmuckmuseum Pforzheim



Schmuckmuseum Pforzheim

Schmuckmuseum Pforzheim



Schmuckmuseum Pforzheim

Schmuckmuseum Pforzheim



Schmuckmuseum Pforzheim

Schmuckmuseum Pforzheim

Overview

- world's only museum on the history of jewellery
- Distance to the Technical Museum 5 min. (combined ticket)
- various special exhibitions

Accessibility at a glance

- Parking spaces for people with disabilities
- Stepless access to the building and all rooms
- 90 cm minimum width of all passages/doors
- WC for people with disabilities
- Assistance dogs welcome

Information for people with walking difficulties and wheelchair users

All areas relevant for testing meet the quality criteria of the label "**Accessibility certified – accessible for people with walking disabilities and partially accessible for wheelchair users**".

Some **information on accessibility** are listed below. For detailed information please see the evaluation report.

- There are two marked parking spaces for people with disabilities.
- The bus stop "Schmuckmuseum" is 60 m away.
- The path to the entrance is easy to walk and drive on and has a maximum longitudinal gradient of 6.5 % over a distance of 16 m.
- The building and all evaluated rooms and facilities available to the guests are accessible without steps.
- The elevator cabin measures 110 cm x 140 cm.
- The ramp to the lecture hall has a maximum gradient of 7% and a total length of 2.40 m.
- All evaluated passageways/doors available to the guests are at least 90 cm wide.
- The cash desk is 84 cm high.
- Seating is available in the exhibition.
- The exhibits are predominately visible when seated. Information is predominately readable when seated.
- There are wheelchair accessible tables available in the café (maximum height 80 cm, wheelchair accessible at a height of 67 cm and a depth of 30 cm).
- Guided tours for people with walking impairments and wheelchair users are offered. A reservation in advance is necessary. The entire route is stepless.

Public WC for people with disabilities

- The manoeuvring spaces are:
in front of the sink and the WC 150 cm x 150 cm;
to the left of the WC 90 cm x 87 cm; rechts neben dem WC 30 cm x 87 cm.
- There are fold-up grab rails to the left and right of the WC.
- The washbasin is wheelchair compatible.
- There is an alarm trigger.

Information for people with hearing impairments and deaf people

Some **information on accessibility** are listed below. For detailed information please see the evaluation report.

- There is no alarm.
- There is no audio induction loop system cash desk, but there is one in the conference and lecture rooms on the ground floor.
- An outgoing emergency call in the elevator is confirmed audibly.
- Information on the exhibits is predominately provided in writing.
- Guided tours for people with hearing impairment, but not for deaf people. A reservation in advance is necessary.

Information for visually impaired and blind people

Some **information on accessibility** are listed below. For detailed information please see the evaluation report.

- Assistance dogs are allowed in relevant areas/rooms.
- There are many glass doors without safety markings.
- Almost all evaluated and usable areas for the guest are well illuminated, i.e. bright and glare-free.
- The signage is designed in clearly legible and contrasting font.
- An outgoing emergency call in the elevator is confirmed audibly. The break position is announced by spoken commands.
- Steps are not visually rich in contrast.
- The exhibits are usually well illuminated.
- Information on the exhibits is predominately provided in writing and is visually rich in contrast.
- Information is not available in Braille or prismatic font.
- Guided tours for people with visual impairments and blind people are offered. A reservation in advance is necessary.

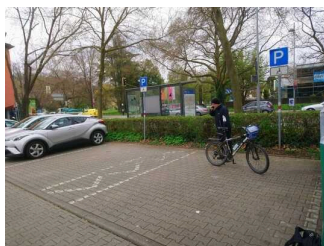
Information for guests with cognitive impairments

Some **information on accessibility** are listed below. For detailed information please see the evaluation report.

- The name or logo of the facility is clearly recognizable from the outside.
- There is no colored or pictorial guidance system available.
- The information on the exhibits is predominately provided in writing, but not in easy language.
- There are no guided tours available for people with cognitive impairments.

Image Gallery

We have put together some photos from the company / offer for you. You can find more photos in the detailed reports.



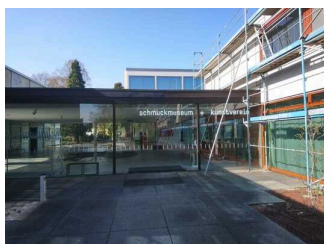
Parking

©Bruno Kohl



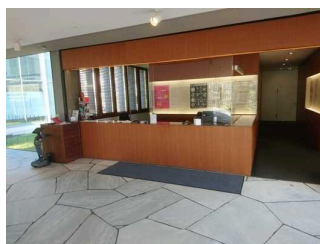
Public transportation

©Bruno Kohl



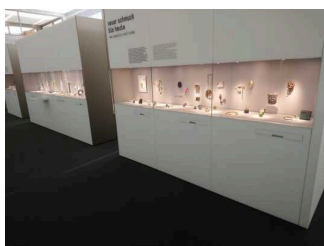
Entrance

©Bruno Kohl



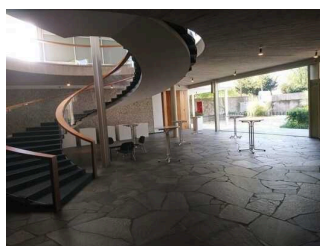
Cash desk / Ticket counter

©Bruno Kohl



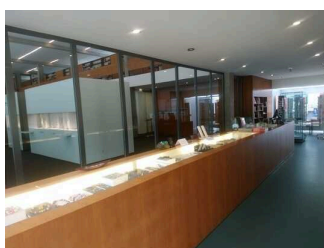
Showrooms

©Bruno Kohl



Showrooms

©Bruno Kohl



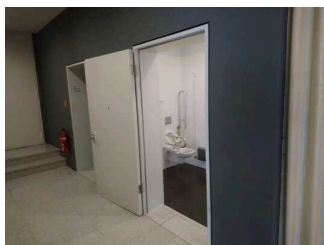
Shop

©Bruno Kohl



Gastronomy

©Bruno Kohl



Public toilet

©Bruno Kohl

Information on the "Tourism for All" labeling system

All establishments and locations certified with the label "Tourism for All" meet the following quality criteria:

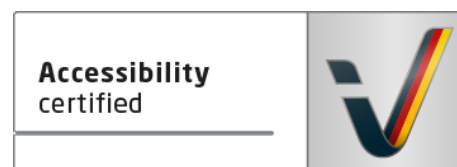
- Data and information on accessibility are collected and checked on site by **external, specially trained evaluators**. The method is not based on self-assessments.
- Data on accessibility is available **in detail** and can be viewed by the guests.
- At least one staff member has successfully passed a **training** on "**Accessibility as a comfort and quality feature**".

The labeling – explanation of the logos and pictograms

The label "**Information about Accessibility**" indicates that detailed and verified information on accessibility is available for all groups of people.



The label "**Accessibility certified**" is based on "Information about Accessibility". It means that the quality criteria defined for specific groups of people are met partially or completely.



The label "**Accessibility certified**" is available in two requirement levels:

"Accessibility certified: partially accessible".

The quality criteria are partially fulfilled for the pictured group of people, i.e. the establishment/location is partially accessible for wheelchair users. The "i" in the pictogram indicates that it is recommended to read again carefully whether the offer meets all (your oder the guest's) individual requirements.



"Accessibility certified: accessible".

The quality criteria are fulfilled for the pictured group of people, i.e. the establishment/location is accessible for wheelchair users.



There are defined quality criteria for **seven groups of people** and a **specific pictogram** for each group.

People with walking disabilities



Wheelchair users



People with hearing impairment



Deaf people



People with visual impairments



Blind people



People with cognitive impairments

